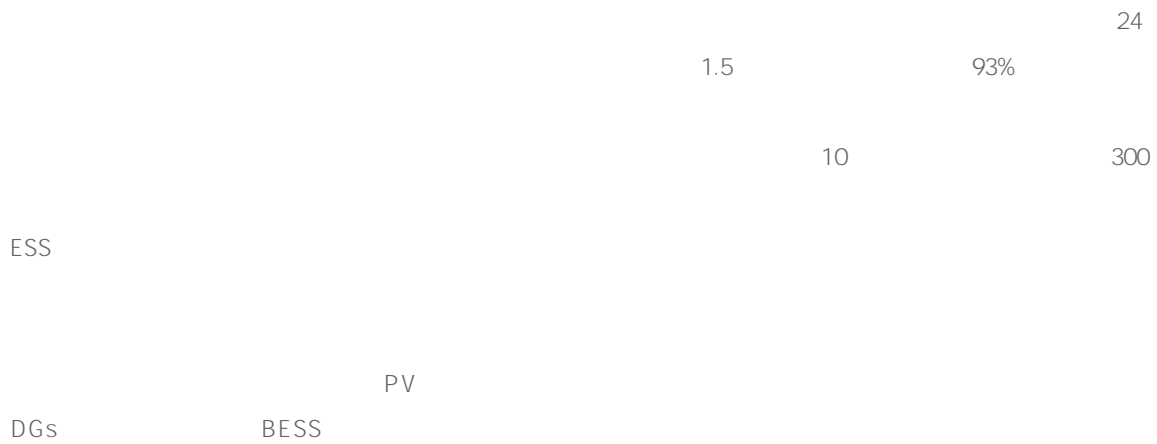
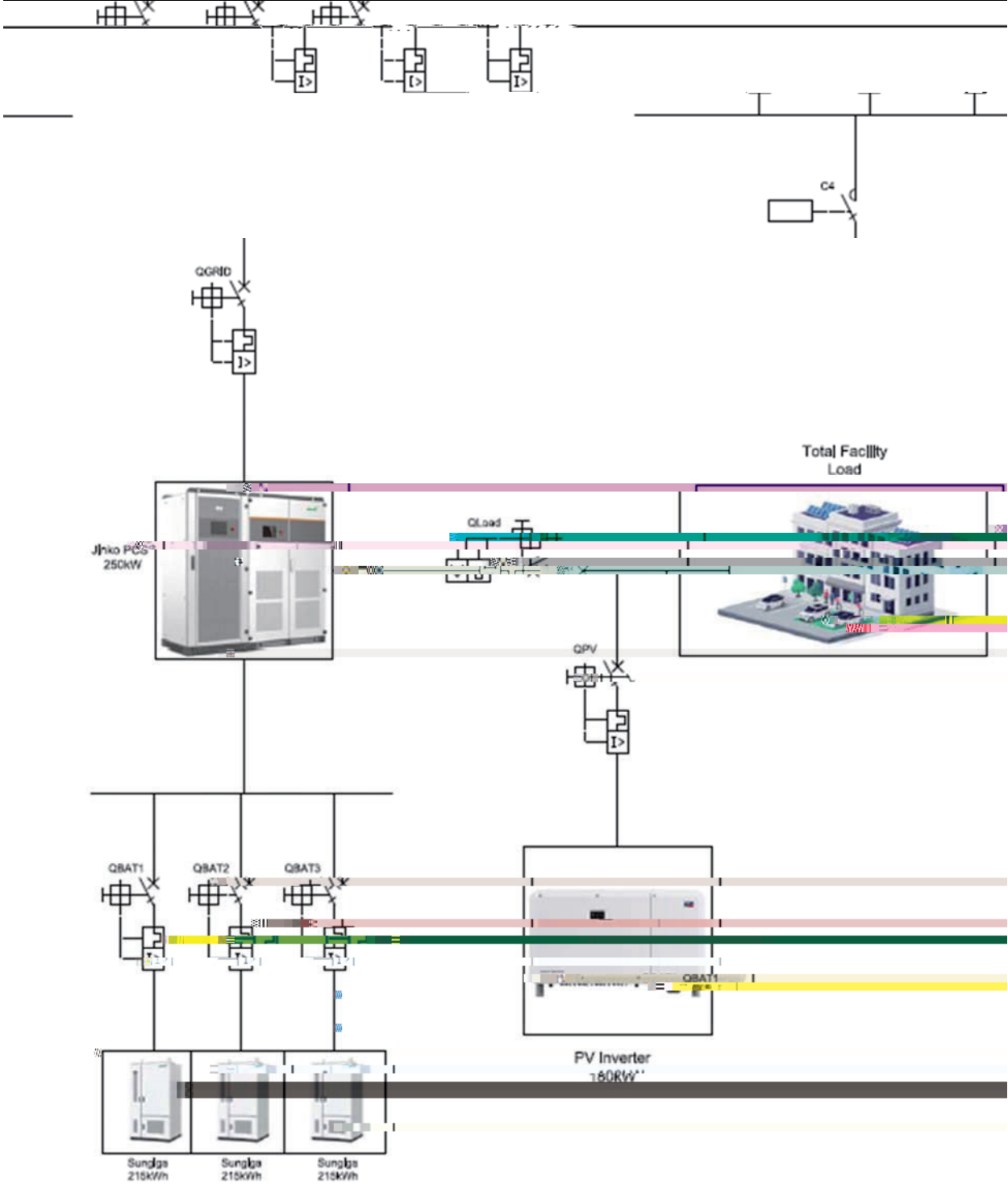
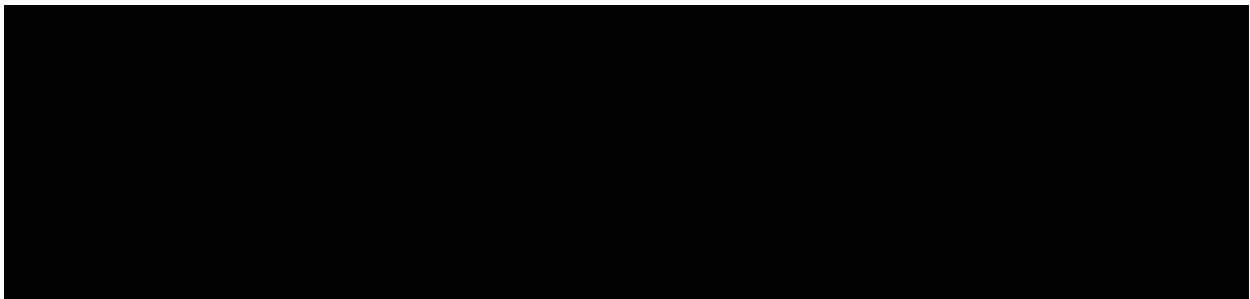




250kW/645kWh

Case Study





645kWh Jinko SunGiga

645kWh

BMS  
EMS

215kWh 5 153.6V  
768V

BMU BMS CAN  
BCU

BMU

BCU HVB BMU

BMS

SOC SOH

BMS

4kW

ESS

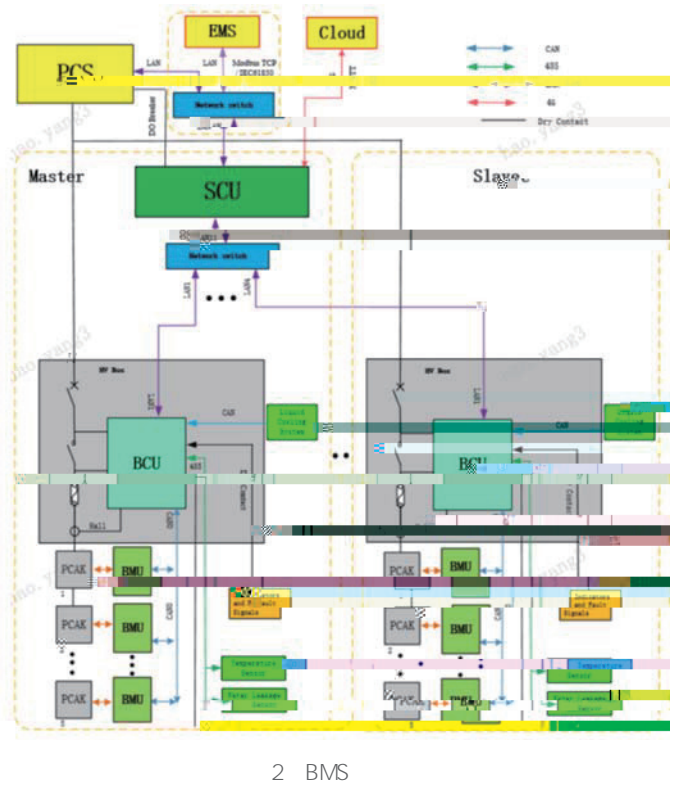
ESS

Battery Rack

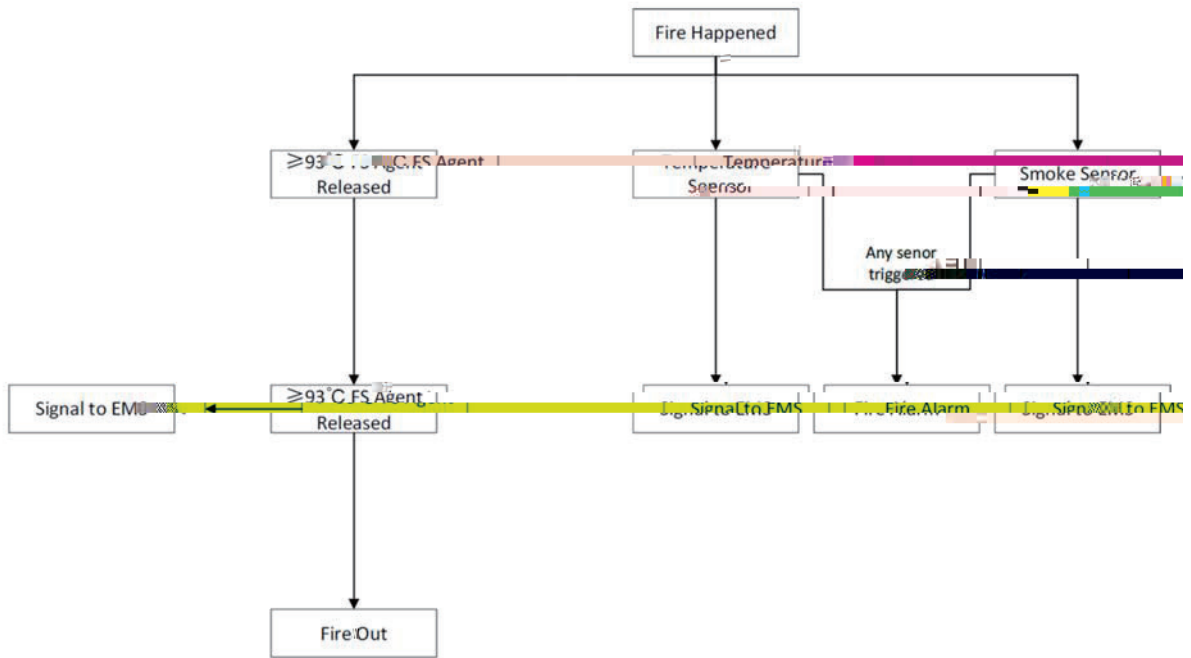
PCS

HVB  
BCU

2 BMS



PCS  
250kW PCS  
DG Grid Following PV Inverters Grid Forming  
PCS DC-AC PQ DC-AC  
VF DC-AC



3



4 PCS



Setpoint



SCU

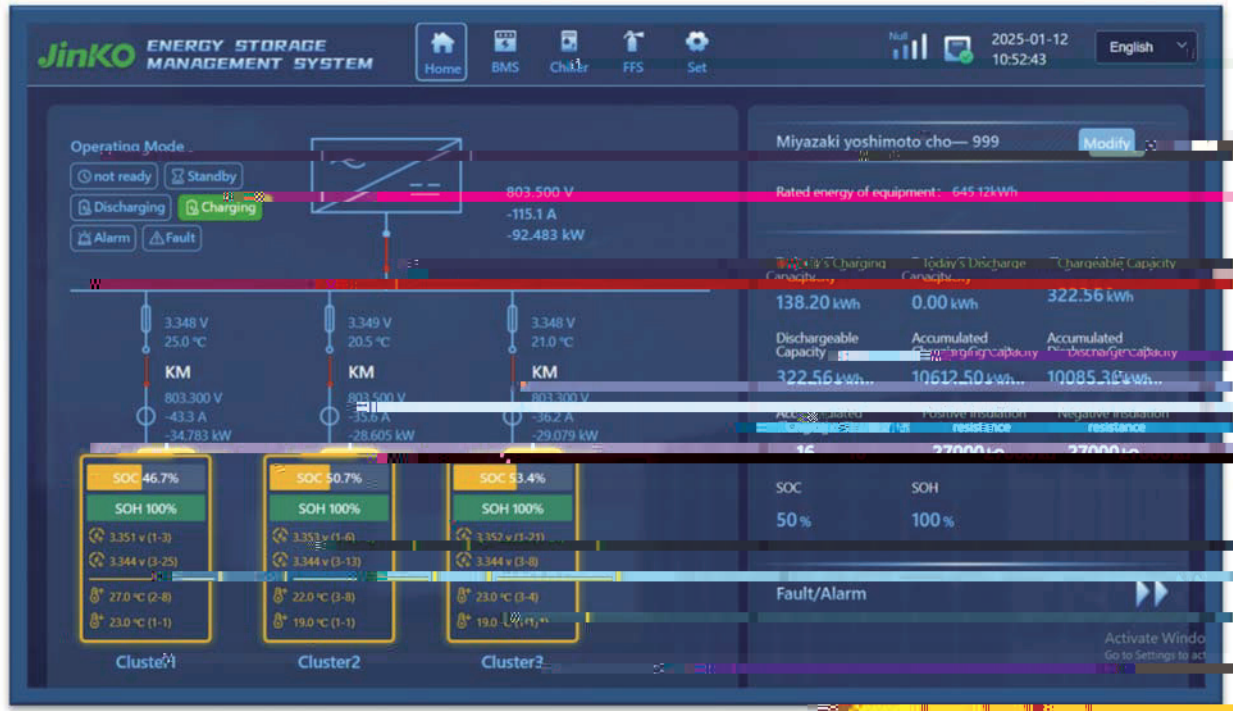
SCU

3

FSS

BMUs

BCUs

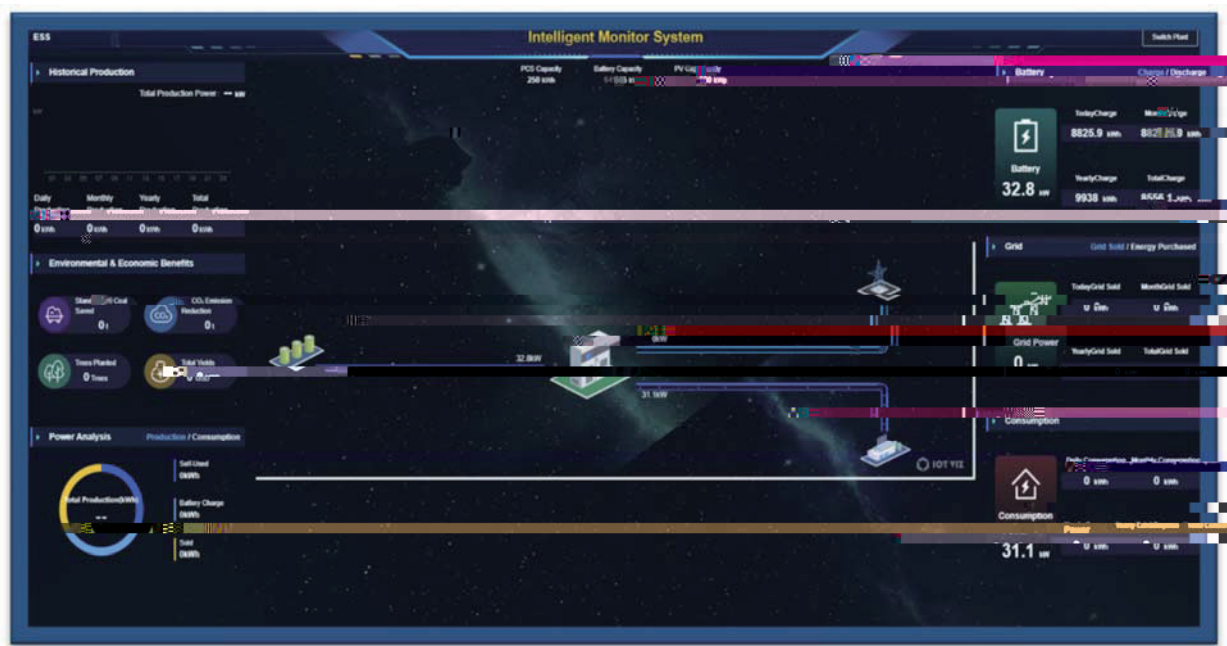


6 SCU



7

IoT



8 EMS

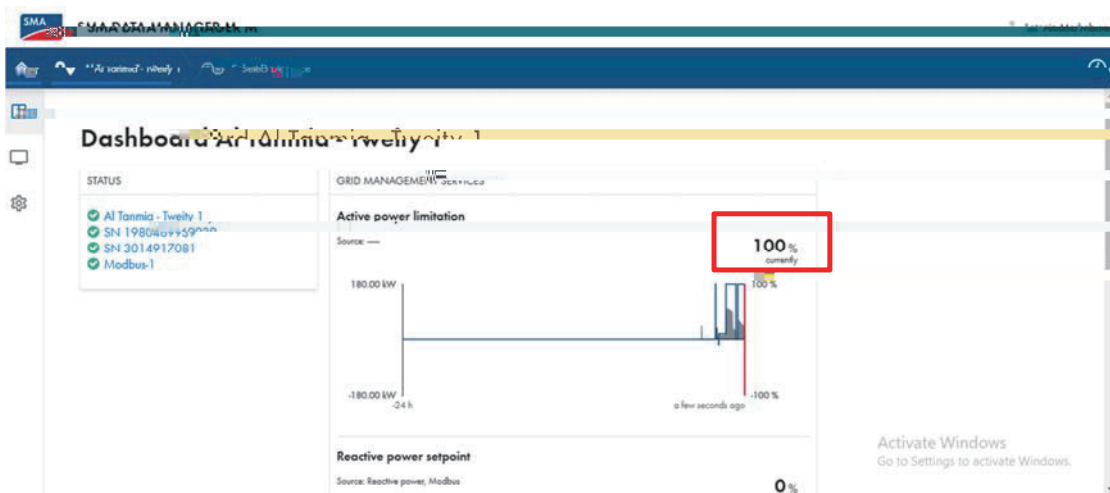
20% SOC 90

SOC

90%

100%

9



9 SMA

EMS

100%

90% SOC 95



98% SOC

*P*

